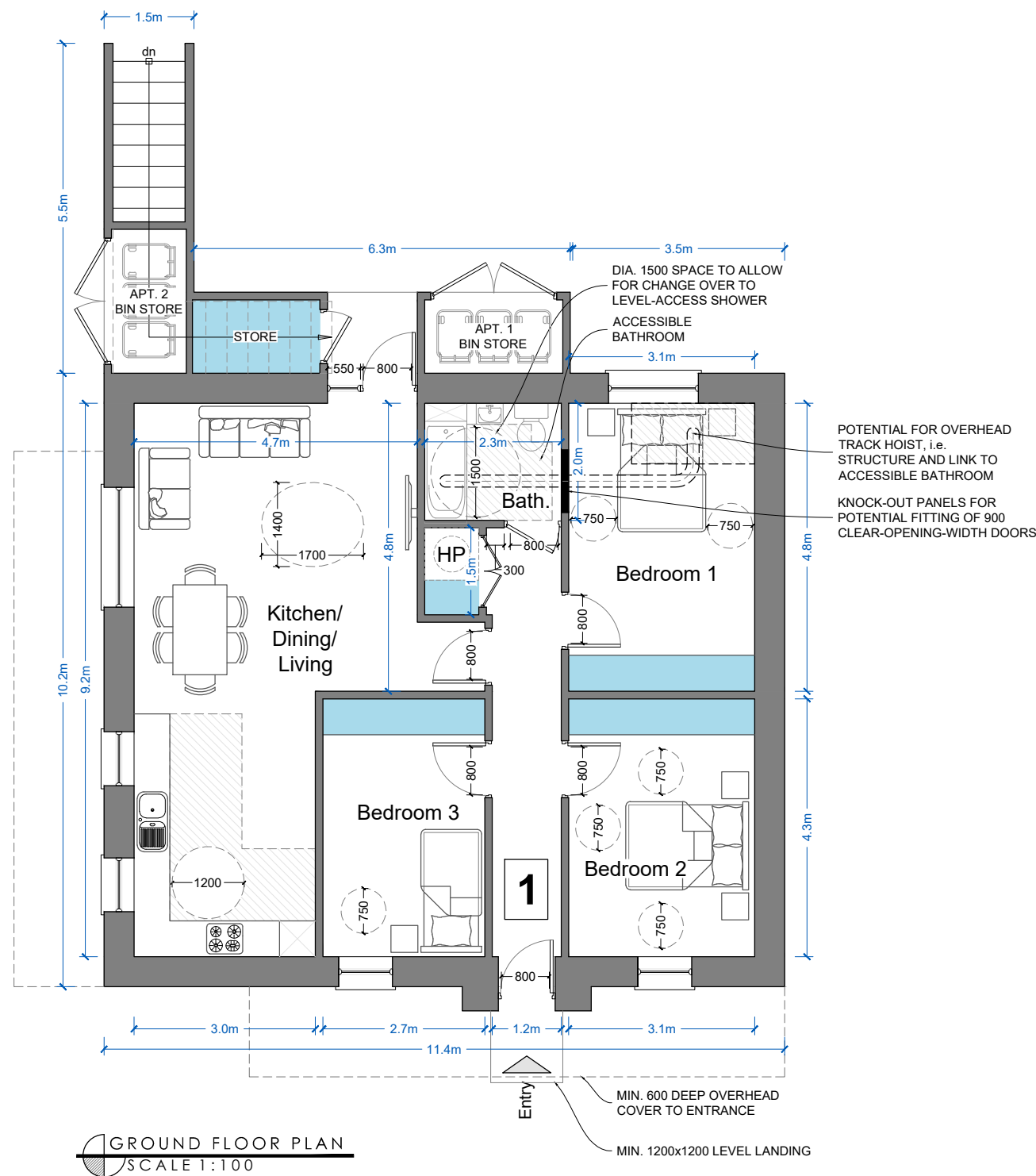


All dimensions to be checked on site. Figured dimensions take preference over scaled dimensions. Any errors or discrepancies to be reported to the Architects. This drawing may not be edited or modified by the recipient.

"Copyright and ownership of this drawing is vested in STRUTEC, whose prior written consent is required for its use, reproduction or for publication to any third party. All rights reserved by the law of copyright and by international copyright conventions are reserved to STRUTEC and may be protected by court proceedings for damages and/or injunctions and costs."


NOTE

LEVELS, ORIENTATION AND SITUATION (E.G. DETACHED, SEMI-DETACHED OR TERRACED) VARY PER UNIT. REFER TO SITE PLAN FOR LEVELS, ORIENTATION AND SITE CONTEXT INFORMATION.



GROUND FLOOR PLAN
SCALE 1:100

APARTMENT 1: 3-BED
FLOOR AREA 95.5m²
INDOOR STORAGE AREA 6m²
OUTDOOR STORAGE AREA (VARIES PER SITE)
PRIVATE AMENITY SPACE (VARIES PER SITE)

REV	DATE	REV BY	DESCRIPTION
-	-	-	-
STATUS PLANNING			
PROJECT CREAGH HOUSING SHD			
PROJECT ADDRESS CREAGH, GOREY, CO. WEXFORD			
DWG TITLE APT. TYPE C1: ADAPTABLE ACCESSIBILITY FLOOR PLAN			
DWG NO PL2-630			REV -
JOB NO 1725		SCALE @ A3 1:100	
DATE 30.11.2018		DRN Liam Minogue	
		STRUTEC, Architectural & Engineering Consultants, Garryhill, Bagenalstown, Co. Carlow, R2 KP44 Ireland Tel +353 (0)59 97 27623 W www.strutec.ie E info@strutec.ie	